

CAMP INFO



Our Address : **617796 Grey Road 18**
Owen Sound, ON N4K 5W4

A Word of Life Canada Ministry

Teen / Kids Camp

WHAT TO BRING

Clothing:

Shirts
Shirts
Sweater
Pants
Socks
Underwear
Modest Swimwear
Jacket
Hat
Sunglasses
Sneakers
Sandals

Toiletries:

Toothbrush
Toothpaste
Deodorant
Soap
Shampoo
Sunscreen
Bug Spray

Other:

Sleeping Bag or Sheets
Pillow
Towels
Mini Fan
Water Bottle
Flashlight
Bible
Notebook
Pen or Pencil

Do Not Bring:

-Personal Devices
-Substances
-Knives

FEQUENTLY ASKED

Q. What are the cabin arrangements like?

A. Campers sleep in gender specific dorm cabins that are equipped with bunk beds. There are approximately four campers to each counsellor with two counsellors assigned to each cabin group.

Q. What type of food do you serve?

A. We serve simple and nutritious meals that are classics at summer camp. If your camper requires special diet accommodations, please notify us immediately. A \$20 fee will be applied to your account to accommodate gluten free, dairy free, and vegetarian diets.

Q. Is there a tuck shop where my camper can buy snacks?

A. Our Snack Shack is open every afternoon and some evenings to purchase snacks and other merchandise. At registration, spending money is deposited to the camper's tab and they can spend money from their account. Any balance on their tab is returned in cash on Friday.

Q. How can parents get in touch with campers?

A. We are a device free camp, but parents are welcome to arrange a phone call with their camper - just call or email us to make arrangements. Parents can also send us an email with letters to their camper and we will deliver it during mealtimes.

Q. Can parents see pictures of their camper while at camp?

A. If you granted your camper picture permission, you can see photos on our Flickr page at flickr.com/wordoflifecanada.

Q. Do you give refunds if we come late or leave early?

A. There are no refunds for late arrivals or early departures.

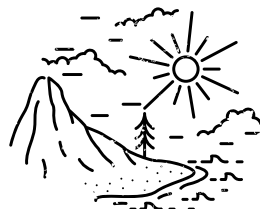
Have other questions? Let us know and we would be happy to help! Please send your inquiries to camp@wol.ca.

OTHER INFO

- All registration paperwork listed in the confirmation email must be completed two weeks prior to arrival.
- Campers must be free from sickness and/or symptoms to receive admittance to summer camp and undergo a short health screening process upon arrival.
- All personal belongings should be clearly labeled with the camper's name.
- A complete list of personal belongings should be included inside the campers luggage.
- Lost and found articles are returned upon payment of postage and claimed within 30 days of departure.
- Any medical notes or care instructions must be reported at registration. All medication (including Tylenol, Ibuprofen, etc.) must be handed in at registration.

Drop Off & Pick Up

Drop Off : Sunday 2:00 - 4:00pm
Pick Up : Friday 7:00pm
End of Camp Rally : Friday 6:30pm



Contact Information

+519 376 3516 x. 201
camp@wol.ca
www.wolyouthcamp.com

CAMP INFO



Our Address : **617796 Grey Road 18**
Owen Sound, ON N4K 5W4

A Word of Life Canada Ministry

Day Camp

WHAT TO BRING

Clothing:

Weather Appropriate Clothing
Sneakers
Hat
Modest Swimwear

Other:

Towel
Water Bottle
Sunscreen
sunglasses
Bug Spray
Bible
Notebook
Pen or Pencil

Do Not Bring:

-Personal Devices
-Substances
-Knives

We recommend packing a backpack for your camper with the items listed above and including a plastic bag to store wet towels and swimwear.

Have other questions? Let us know and we would be happy to help! Please send your inquiries to camp@wol.ca

FEQUENTLY ASKED

Q. How does drop off and pick up work?

A. Drop off and pick up will take place in the parking lot. We kindly ask that you remain in your vehicle and a camp staff member will come to you to pick up and drop off your camper. Please be prepared to show identification for pick up.

Q. Do I need to pack a lunch box for my camper?

A. No - We serve simple and nutritious lunches for campers. If your camper requires special diet accommodations, please notify us immediately. A \$20 fee will be applied to your account to accommodate gluten free, dairy free, and vegetarian diets. If you pack a snack, please make sure it is peanut free.

Q. Is there a tuck shop where my camper can buy snacks?

A. Our Snack Shack is open every afternoon and some evenings to purchase snacks and other merchandise. At registration, spending money is deposited to the camper's tab and they can spend money from their account. Any balance on their tab is returned in cash on Friday.

Q. How can parents get in touch with campers?

A. We are a device free camp, but parents are welcome to arrange a phone call with their camper - just call or email us to make arrangements. Parents can also send us an email with letters to their camper and we will deliver it during mealtimes.

Q. Can parents see pictures of their camper while at camp?

A. If you granted your camper picture permission, you can see photos on our Flickr page at flickr.com/wordoflifecanada.

Q. Do you give refunds if we come late or leave early?

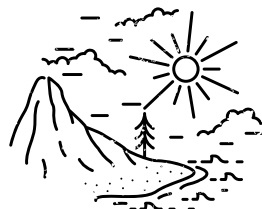
A. There are no refunds for late arrivals or early departures.

OTHER INFO

- All registration paperwork listed in the confirmation email must be completed and your camp balance paid two weeks prior to your camper's first day of camp.
- Campers must be free from sickness and/or symptoms to receive admittance to summer camp and undergo a short health screening process on their first day of camp.
- All personal belongings should be clearly labeled with the camper's name.
- Lost and found articles are returned upon payment of postage and claimed within 30 days of the week the camper attended.
- Any medical notes or care instructions must be reported at registration. All medication (including Tylenol, Ibuprofen, etc.) must be handed in at registration.

Drop Off & Pick Up

Monday - Friday
Arrival : 8:30 - 9:00am
Departure : 4:15 - 4:45pm



Contact Information

+519 376 3516 x. 201
camp@wol.ca
www.wolyouthcamp.com